

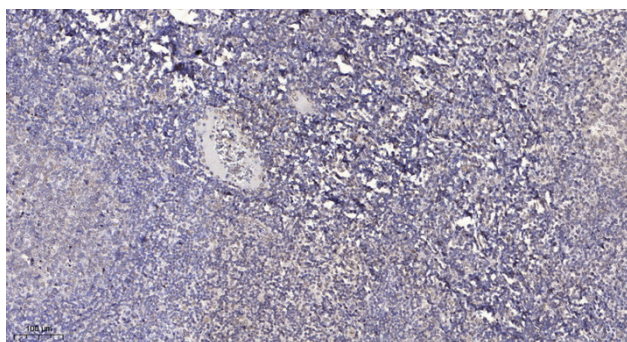


GRIF-1 Polyclonal Antibody

Catalog No	YP-Ab-12732
Isotype	IgG
Reactivity	Human;Rat;Mouse;
Applications	IHC;IF;ELISA
Gene Name	TRAK2
Protein Name	Trafficking kinesin-binding protein 2
Immunogen	The antiserum was produced against synthesized peptide derived from human TRAK2. AA range:430-480
Specificity	GRIF-1 Polyclonal Antibody detects endogenous levels of GRIF-1 protein.
Formulation	Liquid in PBS containing 50% glycerol, 0.5% BSA and 0.02% sodium azide.
Source	Polyclonal, Rabbit,IgG
Purification	The antibody was affinity-purified from rabbit antiserum by affinity-chromatography using epitope-specific immunogen.
Dilution	IHC: 1/100 - 1/300. ELISA: 1/10000.. IF 1:50-200
Concentration	1 mg/ml
Purity	≥90%
Storage Stability	-20°C/1 year
Synonyms	TRAK2; ALS2CR3; KIAA0549; Trafficking kinesin-binding protein 2; Amyotrophic lateral sclerosis 2 chromosomal region candidate gene 3 protein
Observed Band	
Cell Pathway	Cytoplasm . Early endosome . Mitochondrion . Colocalizes with MGARP at the mitochondria. Translocates from the cytoplasm to the mitochondria in a MGARP-dependent manner (By similarity). .
Tissue Specificity	Widely expressed, with highest expression in heart.
Function	PTM:O-glycosylated.,similarity:Contains 1 HAP1 N-terminal domain.,subunit:Interacts with GABA-A receptor and O-GlcNAc transferase (By similarity). Interacts with RHOT1/Miro-1 and RHOT2/Miro-2.,tissue specificity:Widely expressed, with highest expression in heart.,
Background	PTM:O-glycosylated.,similarity:Contains 1 HAP1 N-terminal domain.,subunit:Interacts with GABA-A receptor and O-GlcNAc transferase (By similarity). Interacts with RHOT1/Miro-1 and RHOT2/Miro-2.,tissue specificity:Widely expressed, with highest expression in heart.,
matters needing attention	Avoid repeated freezing and thawing!

**Usage suggestions**

This product can be used in immunological reaction related experiments. For more information, please consult technical personnel.

Products Images

Immunohistochemical analysis of paraffin-embedded human tonsil. 1, Antibody was diluted at 1:200(4° overnight). 2, Tris-EDTA,pH9.0 was used for antigen retrieval. 3,Secondary antibody was diluted at 1:200(room temperature, 30min).